

AMMA
Magazine for Australia & New Zealand

Volume - 3 Issue - 2/3



APRIL 2024
Quarterly Magazine

AMMA
Australia & New Zealand



Contents

EDITORIAL.....	2
BEHOLD AI – WHERE ARE THE REPOSITORIES FOR MOTORING TREASURES	2
The PRESIDENT’s REPORT	3
MUSEUM NEWS	4
AUCTION - NATIONAL HOLDEN MOTOR MUSEUM	4
.....	4
Echuca National Holden Motor Museum Saturday 18th May 2024 - from 9am AEST Sunday 19th May 2024 - from 9am AEST To be held on site 7-11 Warren Street, Echuca VIC 3564.....	4
FEATURED MUSEUM.....	5
Museum Of Motoring Evolution in Shepparton Victoria	5
Overview	5
The Collection.....	5
Cars and Motorbikes	5
Kenworth Dealer Truck Pavilion	6
Farren Bicycle Collection.....	6
Loel Thomson Costume Collection	6
Clayton Gramophones, Telephones and Radio.....	6
The Furphy Museum	7
-M-O-V-E- Contact Details.	7
Access for everyone	7
FEATURE ARTICLE.....	8
WORLD FORUM FOR MOTORING MUSEUMS – JAPAN (October 2024)	8
EVENTS.....	12
AMMA Contacts	13
CONTRIBUTIONS WANTED	13
PHOTO GALLERY	14
Bonnet Mascots.....	14

EDITORIAL



Welcome to the AMMA Quarterly Magazine.

BEHOLD AI – WHERE ARE THE REPOSITORIES FOR MOTORING TREASURES

Cars and Coffee – Are they the Nomadic Museums of the Future.

In principle, there are 3 tiers of historic motoring receptacles.

1. Publicly Accessible Buildings (Museums) - housing vehicles, memorabilia, artifacts and archival media and documentation.
2. Private collections with limited public access and generally holding unknown important artifacts collected and/or passed down through family and friends.
3. Nomadic public gatherings of enthusiasts and their motoring treasures (Cars & Coffee, Mainstream Car Club Displays & Exhibitions) where tall tales and true are circulated but not collected for others to share.

As the age of collectors, collections and collaborators reach their used by date, it is vital this exhaustive and uncontrolled reference material is gathered, ordered and accessible into the future.

The National Archives in Canberra are a perfect example of the long-term investment in historical information of our Australian Heritage. Our motoring heritage is an important part of the development of Australia as it is known today but much of this history is not well documented or scattered as wide as Australia is vast.

The use of AI (Artificial Intelligence) technologies is in the NOW but not yet considered in the broader context of our motoring heritage. It is the means to bring our fading memories into a space for long term accessibility by future generations.

As a thought, the AMMA with the support and funding from all tiers of Government, could undertake a leading role to deliver such a publicly accessible tool for education, historical referencing and cultural background of the importance of transport to a developing society.

The world is a buzz and infatuated by the use of AI to bring disparate, unorganized information together through a simple question. However, the whereabouts of this information must still have a known repository which can be searched to gather the relevant information.

The AMMA membership has access to this basic knowledge and can provide the starting point for this important task.

Ian Bone



The PRESIDENT's REPORT

Welcome to April 2024 Magazine

Hi Folks,

Already we have 25% of the year gone by and the focus is n getting as many members of our association to the World Forum For Motor Museums in Japan in late October this year..

My personal focus is in preparing to take on the worst speaker's timeslot – straight after lunch.

Locally, it is sad to hear that the National Holden Museum in Echuca shuts its doors 14th April following a failure to secure a new owner for this fantastic museum. Your chance to purchase many unique items is on the weekend of the 18-19th May onsite.

I would like to extend to our members the collective expertise of our team to assist where possible to ensure this unfortunate situation does not happen to your museum / collections.

Our membership is slowly growing but more about this next time.

Only a few words this month as I go head down to meet my commitments to the World Forum.

Yours Faithfully your President.

Colin Kiel.

Best regards to all.
Your President
Colin Kiel.



MUSEUM NEWS

AUCTION - NATIONAL HOLDEN MOTOR MUSEUM



Echuca National Holden Motor Museum

Saturday 18th May 2024 - from 9am AEST

Sunday 19th May 2024 - from 9am AEST

To be held on site 7-11 Warren Street, Echuca VIC 3564

Burns & Co are the appointed auctioneers of the iconic National Holden Motor Museum est. 1993 and is extremely well known and respected amongst motoring enthusiast across the country. It's been the home of some of Holdens most iconic models and has been visited by thousands on a yearly basis. Tony and Mark are looking forward to a well-deserved retirement providing an outstanding, once in a lifetime opportunity for all.

Saturday 18th May 2024 starting at 9.00 am AEST

Shop stock, signage, genuine GMH workshop, fittings etc., motors, gearboxes, static displays, prototypes, display cabinets, model cars, car manuals, museum displays, flags etc.

Many items will be "one offs" and put simply, never available for sale. Many items have been rescued from the Holden Manufacturing plants and dealerships scattered across the country. A catalogue not to be missed

Sunday 19th May 2024 starting at 9.00am AEST

Motor vehicles and motorcycles inc. many of Holdens most iconic models including FX, FJ, HK Monaro, HQ Sandman, Torana, HR, HQ Monaro 350, Brougham, HSV90 Statesman, super rare HJ Statesman Coupe factory plus more along with a good spread of classic and vintage motorcycles.

Many of the vehicles are being offered on an unreserved basis.

Inspections:

All lots can be inspected Sunday 12th May from 10.00 am – 4.00 pm or Friday 17th May from 10.00 am – 4.00 pm onsite

ONSITE BIDDING – ONLINE BIDDING including PRE-BIDDING – PHONE BIDDING – ABSENTEE BIDDING

Please note cataloguing commencing Monday 15th April with the catalogue online late April. Conditions of sale etc. to follow. Buyer's premium to apply to all lots.

STRICTLY NO ITEMS AVAILABLE FOR SALE PRIOR TO AUCTION

Eateries, public toilets, car parking all close by

For those wanting to receive an emailed copy of the catalogue please email leonie@burnsandco.com.au

Limited opportunity for outside entries (vehicles only) – please call Ashley Burns on 0408618294.

Please note many of the vehicles currently on display are on loan and don't form part of this auction.

0-0-0

FEATURED MUSEUM



Museum Of Motoring Evolution in Shepparton Victoria

Overview

Open daily, 10 am until 4 pm and located in Shepparton, Victoria.

MOVE is a world-class transport museum. MOVE displays motor cars, motorbikes, trucks, buses, and much more. Learn about the legends of the road transport industry and their machines in the Kenworth Dealer Pavilion's "Avenue of Legends."

MOVE also includes:

The Furphy Museum, The Farren Vintage Bicycle Collection, The Dick Clayton Collection of gramophones, telephones, and radio, and the extraordinary Loel Thomson Costume Collection.

The collections are displayed in a contemporary and interactive exhibition space.

MOVE is a destination offering coffee and dining at the Milestone Café, MOVE Shop for a gift, keepsake, or motoring accessory, and a variety of stores within the Emerald Bank precinct to enjoy.



MOVE is a must-see destination when visiting the region – it has 'something for everyone. See all the latest MOVE information, exhibitions, events, and news in your social media feed!

The Collection

Cars and Motorbikes

MOVE has a dynamic, ever-changing collection of vehicles on display, and machines from every era, and every corner of the globe.



MOVE aims to tell the story of the evolution of modern motoring globally, as well as Australia's automotive history specifically. You will find regular feature exhibits that highlight a particular marque, style, era or country of origin.

The museum houses the Garth Wallace Harley Davidson Collection, which showcases a century worth of fully restored and survivor machines from the iconic brand.

Almost all vehicles on display are on temporary loan, we have an amazing and generous network of collectors and enthusiasts who share their machines with us.

Kenworth Dealer Truck Pavilion

The Goulburn Valley is one of Australia's most important regional transport hubs. The local transport industry has its beginnings supporting the regions agricultural activities and has evolved to be a major employer and economic contributor in it's own right. Today one in four commercial vehicles in Victoria are registered in the Goulburn Valley. The Kenworth Dealer Pavilion at MOVE houses around fifty trucks, buses and other commercial vehicles of varying ages.



The pavilion also features the legends of the local trucking and transport industry, telling the story of their lives, their businesses and the trucks they operated. MOVE would not be possible without the ongoing support of the Goulburn Valley transport industry.

Farren Bicycle Collection

The late Paul Farren and his wife Charlie dedicated forty years to amassing one of the finest collections of vintage bikes in the world. The collection consists of more than 200 bikes, dating from as early as the 1860s and including tricycles, penny farthings, and even hobby horses. It is arguably one of, if not the most, important collections of its type anywhere in the world. MOVE is host to a large proportion of this extensive collection. Charlie works closely with Move to ensure the best possible visitor experience and shares her extensive knowledge through different mediums. Join us for a cycle through time.



Loel Thomson Costume Collection



Take a journey through 200 years of Australian fashion with this collection of clothing, jewellery, accessories and more. 7,500 objects, collected over 40 years by Loel Thomson OAM, tell the stories of everyday Australians from Federation up to the present day. With pieces you've never heard of alongside the familiar, old and new and everything in between, there's something to interest everyone.

The collection also includes an extensive research library, with books and magazines on every conceivable topic relating to fashion and costume. Students are welcome to utilise this by appointment.

MOVE is proud to have been gifted this collection and is working to maintain Loel's legacy as well as expand upon it. It is a gift to the region for generations to come.

Clayton Gramophones, Telephones and Radio



The late Dick Clayton was an avid collector and historian, as well as being a constant presence across radio, tv and telecommunications industries in the Goulburn Valley. His desire to preserve and display his personal collection of gramophones, telephones, and radios was a real driving force behind the founding of MOVE's predecessor, The Shepparton Motor Museum and Collectables.

The collection has been not only donated by his family, but they continue to work with MOVE to maintain the collection and educate our staff, volunteers and visitors about Dick's lifelong passion.

The Furphy Museum



The Furphy Museum is a dedicated area within MOVE showcasing the history of the iconic family businesses Furphy & Sons and Furphy Foundry and their evolution through to the modern era.

From the famous water carts and camp ovens, through two world wars, to the modern engineering and manufacturing businesses that still operate in Shepparton and beyond today. It's a story full of characters, hard work, ingenuity and maybe even a tall tale or two.

-M-O-V-E- Contact Details.

Museum of Vehicle Evolution
7723 Goulburn Valley HWY
Kialla, Victoria 3631
[\(03\) 5823 5833](tel:(03)58235833)

Opening Hours

Monday	10:00 am - 4:00 pm
Tuesday	10:00 am - 4:00 pm
Wednesday	10:00 am - 4:00 pm
Thursday	10:00 am - 4:00 pm
Friday	10:00 am - 4:00 pm
Saturday	10:00 am - 4:00 pm
Sunday	10:00 am - 4:00 pm

Access for everyone

Level access

You can access MOVE from the front car park and entrance. All public areas of MOVE, including the shop and café, are accessible, including a wheelchair/non ambulant lift allowing access to exhibits and the training room on the mezzanine level.

Parking

Disability/accessible parking is allocated and available at the front of the building

Companion Card

MOVE accepts the Companion Card. Carers and attendants accompanying cardholders receive free entry to ticketed exhibitions and events on presentation of this card.

Toilets

Accessible toilets are located inside the MOVE entrance.

Phone: (03) 5874 3358

Open 10am -4pm Daily

---000---000---

FEATURE ARTICLE

WORLD FORUM FOR MOTORING MUSEUMS – JAPAN (October 2024)

The AMMA is a major supporter of the World Forum of Motor Museums and this year our Chairman will be presenting in the most difficult time slot – immediately after lunch. We wish him well.

It would be fantastic to get as many of our members and families to attend.



The World Forum for Motor Museums is not just an international conference, for almost thirty years it has provided one of the most useful vehicles (pardon the pun) for museum personnel networking that has proved incredibly rewarding for all those taking part.

How often have we visited other museums and thought to ourselves, “that’s a good idea, I can adapt and use that”. At the World Forum you have the opportunity to discuss and develop new ideas, share and develop solutions to problems that in singularity appear to be barriers but when discussed as a group can provide fruitful suggestions if not complete answers. There is an old saying that a problem shared is a problem halved with the added comfort that comes from the realisation that other museum folk have similar problems.



American delegates at the 10th Forum, Haynes International Motor Museum



British Delegate Micheal Penn tries a GM design at the 11th World Forum, Detroit

Over a period of five days the delegates work hard and play hard taking every opportunity to learn from other delegates either from the podium or over coffee and cake during break times.

Coventry Transport Museum



Planned field trips are designed to highlight behind the scenes methodology, often innovative methodology that can provide a useful addition to add to the delegate’s experiential knowledge base which in turn can be carried back to their own museums.

Holden Torana V8 (MMWA)



Australian Byfield with V12 Jaguar Motor (MMWA)



Motor Museum of Western Australia

Many delegates have developed bon homme and friendships that have gone on to provide fruitful relationships for many years. Looking back over 30 years attending this forum I my life has been enhanced by the many people of all nationalities that I have met during forum proceedings.



HRH Prince Michael of Kent opens the 10th Forum



Hidden collections in Italy



Panini Museum Italy. Cheese and Sports Cars

In these photographs there are representatives from over 20 countries many of whom are repeat participants many times over. The forum secretariat has links to over 1,500 transport museums worldwide. If your museum is not represented let us know, it costs nothing to be included

A summary of the event from the organizing committee with important information for when you BOOK YOUR TRIP, is follows: -



Dear all,

The World Forum board would like to sincerely thank you for your active support and participation in the World Forum For Motor Museums (WFFMM).

With respect to the 2024 Japan Conference that is briefly posted on the WFFMM website, we would like to share the following updates.

1. Schedule

Oct 29th (Tue) – Welcome cocktail & Reception at Toyota Club (Aichi Prefecture)

Oct 30th (Wed)– Oct 31st (Thu)/Opening remarks, Key 8 sessions, etc. at Toyota Automobile Museum (in Aichi Prefecture)

Nov 1st (Fri) – Guided Tour & Farewell Dinner at Fuji Motorsports Museum (in Shizuoka Prefecture)

Nov 2nd (Sat) – Move to Mishima and delegates disperse

*Special Japan tour before and after the forum will be arranged upon requests (e.g. popular sightseeing spots, Japanese Auto Manufacturer's Heritage centres, etc.)

2. Programs (TBD)

• Overall theme is “Hindsight Insight Evolution”

• Now refining 8 programs covering sub-themes among “Culture & Heritage”, “New Trends & Digitization,” “Community,” “Mobility & Future,” and “Operation.”

3. Registration fee (projected)

a. Early bird*¹ (Application by April 30th, 2024): 61,600 JPY

b. Normal: 77,000 JPY (Application deadline is July 31st*²)

○ *¹ Application is planned to start in late February

○ *² Application will close when the maximum number of participants is reached

4. Accommodations (recommended)

Oct 29th – Oct 31st in Aichi Prefecture: Marriott Associa hotel (27,000 JPY/night/head)

Nov 1st in Shizuoka Prefecture: Fuji Speedway hotel (70,400 JPY/night/room) or CLAD (26,000 JPY/night/head)

**The WFFMM 2024 Japan secretariat has reserved rooms for guests with the tentative rate (no need to personally reserve rooms at this moment)*

5. Inquiry contact

WFFMM 2024 Japan secretariat: 2024wffmm@toyotatourist.co.jp

As the forum will be held for the first time in Asia, secretariat members have been active, visiting motor museums in Europe, U.S., and Asian countries to get them on board (other museums to follow). We believe that the best practices of these diverse museums will surely provide new insights, learnings, and stimulation for the participants. The forum participants will also include Japanese Auto manufacturers/auto museums, so please enjoy engaging with them too.

We are proud to announce that almost all of the domestic Japanese automobile manufacturers have come together to serve as the WFFMM 2024 Executive Committee to plan this Forum.

By fixing the date and posting updates, we are giving participants the opportunity to plan ahead and be part of this exciting event.

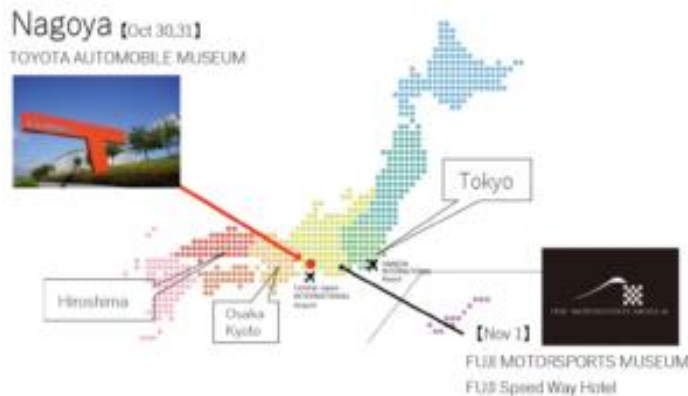
We sincerely hope that you can join us at the World Forum For Motor Museums in Japan and look forward to welcoming you.

Yours sincerely,

Michael Penn
Chairman

Naoaki Nunogaki
Chairman

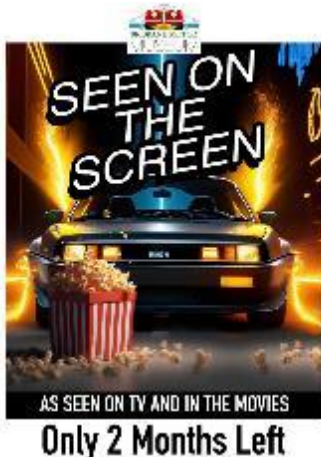
World Forum for Motor Museum WFFMM 2024 Japan
Executive Committee





EVENTS

DATE	EVENT	Comments
2024		
18 th /19 th May 2024	National Holden Museum AUCTION On Site Echuca Victoria	The closure on 14 th pril2024 will be followed by the Auction of all salable items – cars, memorabilia and stock.
Open March 2024 thru' 31 st May 2024	Brisbane Motor Museum	“Seen on the Screen” exhibition.
2024		
October/November 2024	WORLD FORUM for MOTOR MUSUEMS	To be held in Japan – sponsored by Toyota with venues including Fuji Motorsport Museum. Links: https://worldforumformotormuseums.com/ https://fuji-motorsports-museum.jp/
2028		
PROPOSED November 2028 In Australia	WORLD FORUM for MOTOR MUSUEMS	Looking for people to be involved in the planning and presentation stages





AMMA Contacts

CHAIR - 0412 539 634 Colin Kiel - 4C's Motor Museum – Qld	QLD Delegate – 0414 752 203 Carl Amor – Gold Coast Motor Museum
VICE CHAIR - Belinda McMartin – Museum of Fire Penrith NSW	ACT Delegate - Vacant
SECRETARY - 0438 154 748 Ian Bone PO Box 64 Mt Ommaney – Qld Email: ian@qldmotorsportmuseum.au	NSW Delegate - Belinda McMartin – Museum of Fire Penrith NSW
TREASURER - 0429 682 465 Maxine Kiel - 4C's Motor Museum Email: maxinekiel@hotmail.com	VIC Delegate - 0411 465 098 David Peck - The Motorist
New Zealand Delegate - Vacant	TAS Delegate - 0407 881 288 Daryl Meek
World Forum of Motor Museums Delegate – 0412 539 634 - Colin Keil 4C's Motor Museum	S/NT Delegate - Vacant
Roving Ambassador - 0412 539 634 Colin Kiel - 4C's Motor Museum	WA Delegate Pat O'Callahan - Motor Museum of WA

CONTRIBUTIONS WANTED

Your contributions are integral to creating a successful magazine. Contributions or suggestions for content should be directed to: -

Ian Bone – ian@qldmotorsportmuseum.org

PHOTO GALLERY

Bonnet Mascots

Do you recognize any of these gems?





And for now, we say goodnight until we spread the news next Quarter